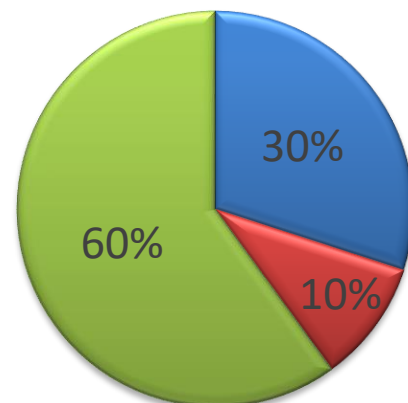


## Share Structure (October, 2017)

- TSX Venture Exchange: “CEI”, OTCQB: “CYRTF”
- Issued & Outstanding: 37,252,472 shares
- Market capitalization: ~\$4 million

## Share Ownership



\*Approximate share ownership

Management

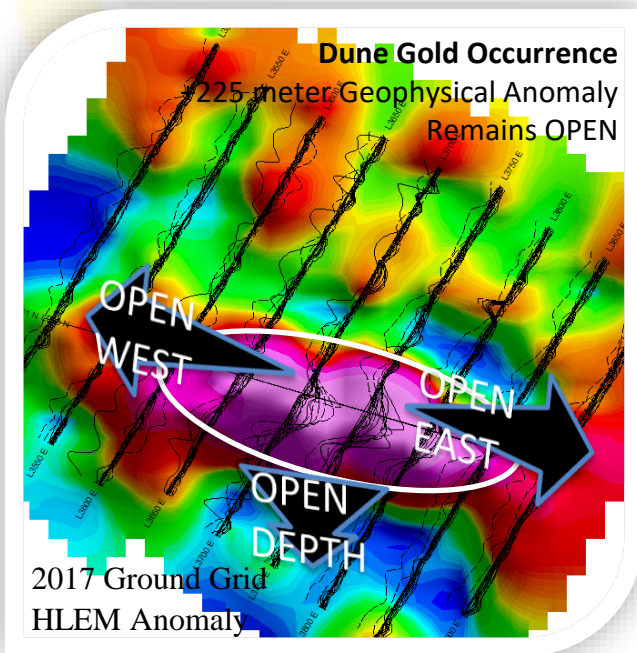
Close Associates

Private Investors / Retail



## Value Proposition

- Re-discovering gold & diamond assets
- 100% ownership with low holding costs
- Gold & diamond explorer and developer
- Projects surrounding existing mines (past producers)
- Regional scale opportunities
- Nunavut & NWT, Canada: established mining jurisdiction
- No debt with advanced assets
- Experienced mining professionals



## Contwoyto Gold Project, Nunavut, Canada

- Located south of the Lupin Gold Mine with all infrastructure in place
- High-grade historical results (DDH87-13: 63.49 g/t Au across 4.86 meters)
- Drill program in progress
- Potential for a maiden, high-grade, near surface gold resource, near existing infrastructure
- Shallow, near surface gold showings
- Exploration potential along strike and at depth
- Gold potential along strike of historical showings
- Existing gold deposits and advanced exploration projects throughout the region
- Established and growing gold mining jurisdiction



## Diamond Projects, Nunavut, Canada

- 3 diamond projects covering 1,150km<sup>2</sup> in Nunavut, Canada
- Projects located near the Jericho Diamond Mine, infrastructure in place
- Diamonds discovered: 2.73 carat (ct), 2.67ct, 1.61ct, 0.49ct, 0.40ct, 0.36ct
- High potential assets with good grade and size
- Drill ready kimberlite (diamond) discovery targets
- Potential new diamond discoveries near existing infrastructure
- Existing diamond mines and advanced projects throughout the region
- Established and growing diamond mining jurisdiction

The technical content of this presentation have been reviewed and approved by Dean Besserer, P.Geol., the Technical Advisor of the Company and a Qualified Person as defined by National Instrument 43-101.

